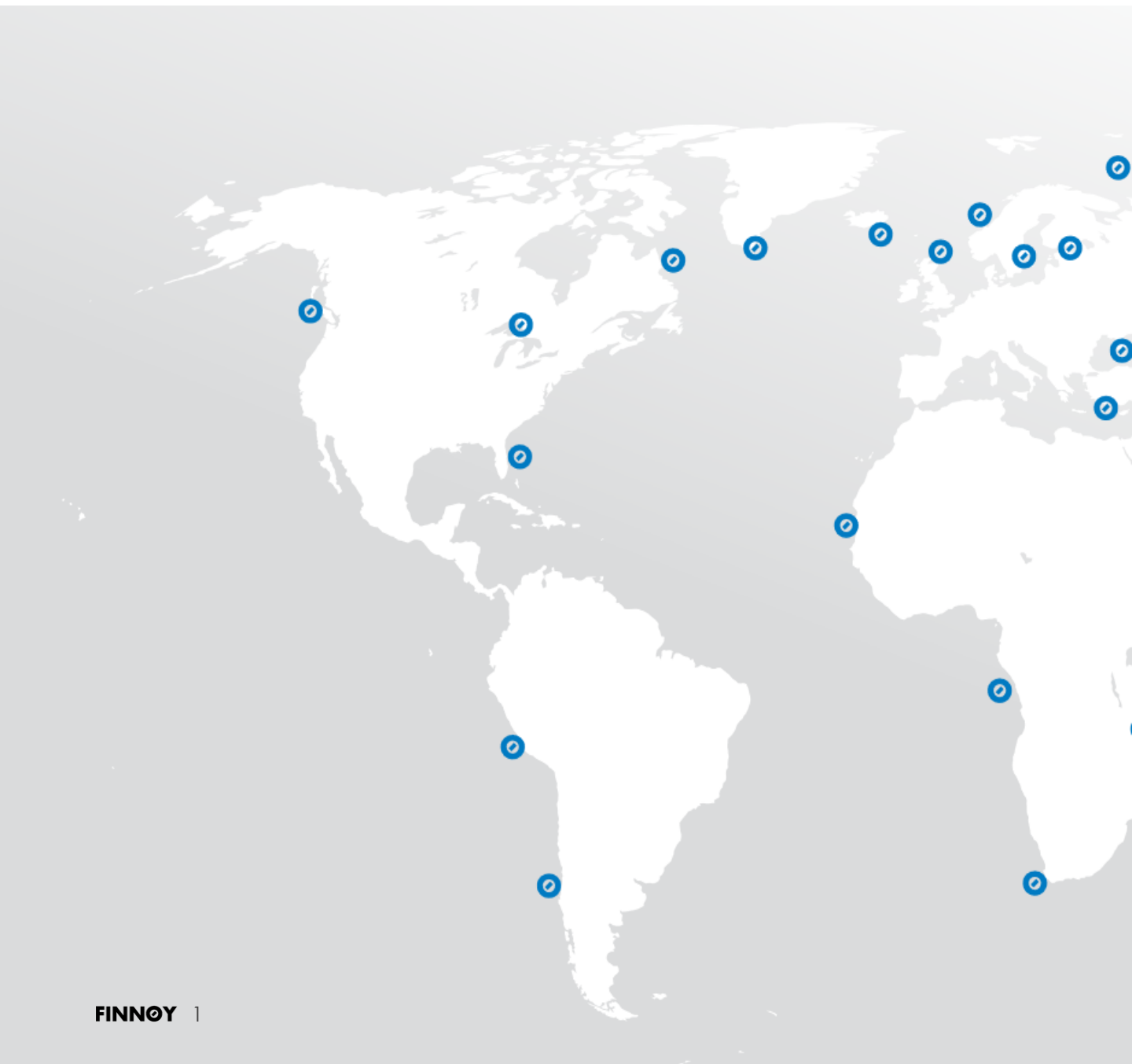


FINNOY

Aquaculture

GLOBAL REFERENCES

For more than a century, shipyards, ship owners and naval architects have chosen Finnøy Gear & Propeller as the preferred provider of marine propulsion solutions. Our portfolio of reference projects spans over more than 1500 installations for a wide range of vessels. The overview here is not a complete list, but gives an overview of the segments in which we operate. Among others these include offshore, aquaculture, fishing, yachts, ferries and merchantile marine.



Meet us at exhibitions

We are proud to present our company at domestic and overseas exhibitions in the maritime industry. Visit us online to have look at our exhibition calendar at finnoygear.com/exhibition.



Evolution

Ever since our early days in 1884 we have been specializing in the development of propulsion systems for oceangoing vessels across ship types.



LIVE FISH CARRIER



RO ARCTIC, RO SERVER, RO NORTH, RO WEST, RO FORTUNE, RO VISION, RO VENTURE, RO SENJA

Yard Larsnes Mek. AS , Y.no. 54, 55, 56, 57, 62, 65, 66, 70
Gearbox G70FP
Propeller P85.30.300.4D HS
E-motor 1800kW-900rpm + 1200kW-1800rpm (2999 kW)



RO SAILOR & RO TBN

Yard Larsnes Mek. V. AS Y.no. 67, 71
Gearbox G70FK
Propeller P85.30.320.4D
Engine 2999 kW-750 rpm



ORCAYKA

Yard Larsnes Mek. Verksted AS Y.no. 68
Gearbox G70FK
Propeller P85.30.320.4D
Engine 2999 kW-750 rpm



INTER ATLANTIC

Yard Zamakon, Spain Y.no. 802
Gearbox G70FP-2SPEED
Propeller P78.26.300.4D
Engine 2100 kW-750rpm



INTER TBN II

Yard Zamakon, Spain Y.no. 803
Gearbox 2G30-50F
Propeller 2 x 1000 kW-1200 rpm
Engine kW-1200 rpm



INTER CALEDONIA

Yard Besiktas - Turkey
Gearbox G60FP
Propeller P78.26.300.4D HS
E- motor 1200+800kW-1200 rpm(tot. 2000 kW)



INTER BARENTS (Ex. LADY ANNE MARIE)

Yard VARD Aukra AS, Y.no 880
Gearbox G50FP
Propeller P65.22.240.4D HS
E-motor 2 x 750 kW-1800 rpm(tot. 1500 kW)



INTER NORD (Ex. BJØRG PAULINE)

Yard Vaagland Båtbyggeri AS.
Gearbox G70FP
Propeller P85.28.300.4D
E-motor 2 x 1250 kW-1800rpm



INTER FIORD (Ex. KIRSTI H)

Yard Solund Verft AS
Gearbox G60FK
Propeller P70.26.260.4D HS
Engine 2030 kW-1000 rpm
Thrusters 300 - 360 kW



AQUA VIKING (Ex MARTIN SÆLE)
Yard Gondan – Spain, Y.no 468
Gearbox G70FK
Propeller P78.26.300.4D HS
Engine 1920 kW-750 rpm



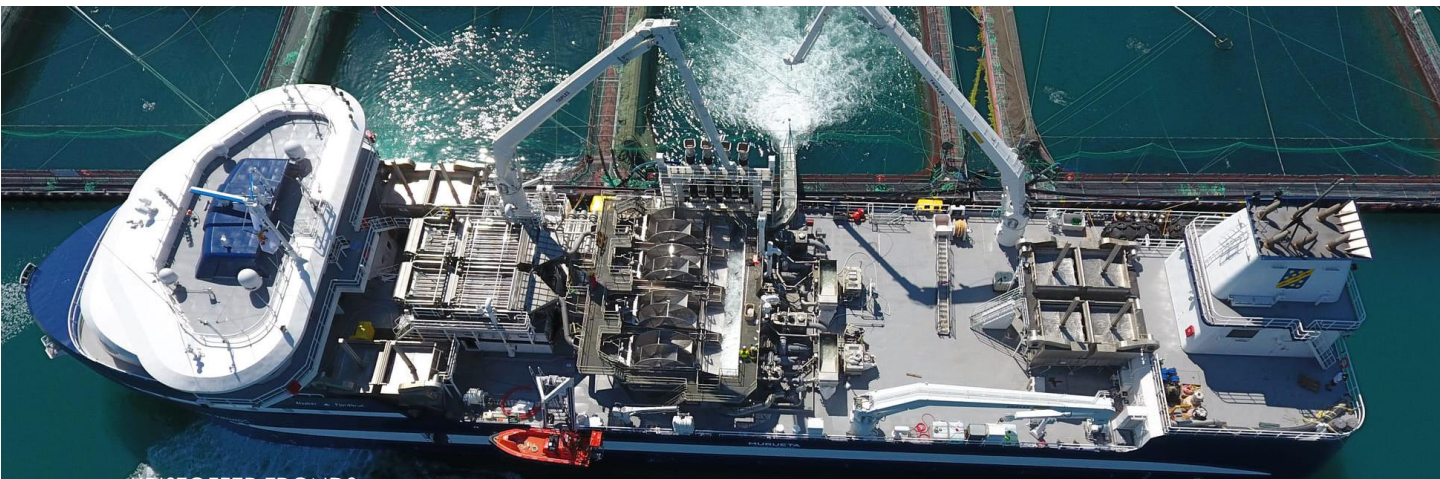
GRIP PACIFIC
Yard HAT-SAN TURKEY
Gearbox G60FK
Propeller P78.26.300.4D HS
Engine 1730 kW-900 rpm



AQUA CALEDONIA
Yard Balenciaga, Y.no. 414
Gearbox G60FP
Propeller P78.26.300.4D HS
E-motors 2 x 900 kW – 1500 rpm (tot.1800 kW)



RONJA HARVESTER & RONJA ATLANTIC
Yard Aas Mek. Verksted AS.
Gearbox GXU600FK
Propeller P85.26.280.4D
Engine 1920kW-1600 rpm



KRISTOFFER TRONDS
Yard MURUETA SA – Spain Y.no 320
Gearbox 2G42-60F
Propeller P78.30.300.4D HS
E-motor 2 x 1495 kW-1200 rpm (tot. 2990 kW)

PROCESS VESSELS



TAUPO, TAUPIRI & TAUMAR

Yard Fitjar Mek. Verksted AS, Y. no. 39, 43 and 49
Gearbox G50FKV (39,43) G50FK (49)
Propeller P65.22.240.4D HS (39,43) P58.20.220.4D HS (49)
Engine 1350 kW-1400 rpm (39,43), 1044 kW-1200rpm (49)



SEIHAUST
Yard Fitjar Mek. Verksted AS, Y. no.42
Gearbox G50FKV
Propeller P65.22.240.4D HS
Engine 1350 kW-1400 rpm



HORDAFJELL,
Yard Fitjar Mek. Verksted AS, Y.no. 48
Gearbox G42FK
Propeller P50.17.190.4D HS
Engine 746kW-1800 rpm



MACHO 36 APV – EMMANUEL
Yard Crisp Bros in Australia
Gearbox G50FPV
Propeller P58.19.240.4D HS
Engine 736kW - 1800rpm
 +PTH «Power Take Home»
 300kW 0-1500rpm

AQUA MIST & VOLT HARVEST 1

Yard Fitjar Mek. Verksted AS, Y.no. 45, 53
Gearbox G42FK
Propeller P50.17.190.4D HS
Engine 746kW-1800 rpm



VOLT HARVEST II & VOLT HARVEST III

Yard Fitjar Mek. Verksted AS, Y.no. 50, 51
Gearbox G42FKP
Propeller P50.17.190.4D HS
Engine 746kW-1800 rpm + PTI 300kW

FONNALAKS

Yard Balenciaga, Y.no. 412
Gearbox G60FP
Propeller P65.22.240.4D HS
Engine 1044kW-1135 rpm + PTI 500kW

FISH FARMING SERVICE



MACHO 25 – FRØY SERVER
Yard Sletta Verft Y.no 145
Gearbox G50FKV – 2 x PTO
Propeller P58.19.240.4D - HS
Engine 735 kW-1800 rpm



MACHO 40 – FRØY FIGHTER
Yard Sletta Verft Y.no 150
Gearbox G50FKV – 2 x PTO
Propeller P58.19.240.4D - HS
Engine 735 kW-1800 rpm



MACHO 25 DE – FRØY FINNMARK
Yard Sletta Verft Y.no 169
Gearbox 2G23-35F
Propeller P58.19.240.4D - HS
E-motor 2 x 374 kW-1500 rpm



MACHO 25 DE – NOVA MASTER
Yard Sletta Verft Y.no 171
Gearbox 2G23-35F
Propeller P58.19.240.4D - HS
E-motor 2 x 374 kW-1500 rpm



MACHOCAT 25 – FRØY HARVEST
Yard Sletta Verft Y.no 157
Gearbox 2 x G35F
Propeller 2 x P39.13.170.4D HS
E-motor 2 x 375 kW-1800 rpm



MACHOCAT 25 – FRØY VALKYRIEN
Yard Sletta Verft Y.no 158
Gearbox 2 x G35F
Propeller 2 x P39.13.170.4D HS
E-motor 2 x 375 kW-1800 rpm



AQS ODIN

Yard Moen Marin AS.
Gearbox 2 x G27F
Propeller 2 x P35.12.150.3
Engine 2 x 331 kW-1800 rpm



PERLE

Yard Viknaslipen Y.no 30
Gearbox 2 x G23FK – 2 x PTO
Propeller 2 x P34.12.120.4
Engine 2 x 375 kW-1800 rpm



NOTMANN & NOTHAV

Yard NSS Spolka
Gearbox 2 x G27F
Propeller 2 x P30.12.150.3D
Engine 2 x 331 kW-1800 rpm



FDA ASTRID & FDA FINN

Yard Salthammer Y.no 146 - 148
Gearbox G42FK / G42FKR – 2 x PTO
Propeller 2 x P39.13.170.4D
Rudder nozzle 2 x RD170x0,45 HS
Engine 2 x 368 kW-1800 rpm



NIKLAS

Yard Fitjar MV. AS Y.no 218
Gearbox 2G27-42F
Propeller P50.17.190.4D HS
E-motor 2 x 375 kW-1800 rpm



MARØY VIKING, TROLL, KB NAMDAL, HELNESSUND, GODFISKEN,
 AQUA SERVICE, AQS TOR, COSTAL SERVER & KB ROKK
Yard MOEN MARIN AS. Tehn. Y.no. 99, 100, 101, 103, 108,111,114,115, 119
Gearbox G42FK – 2 x PTO
Propeller P50.17.170.4D HS – P50.17.190.4D HS
Engine 735kW-1800 rpm



FISH FARMING SERVICE – 15 M.



OCEAN APOLLO

Yard ETKIN Marin
Gearbox G27FK – 2 x PTO
Propeller P34.12.130.4D
Engine 287 kW-1900 rpm



AURORA

Yard Viknaslipen Y.no. 17
Gearbox G18FK – 2 x PTO
Propeller P26.9.120.3
Engine 291 kW-1900 rpm



AURORA QUEST

Yard Viknaslipen Y.no. 35
Gearbox G23FK – 2 x PTO
Propeller P34.12.130.4
Engine 287 kW-1900 rpm



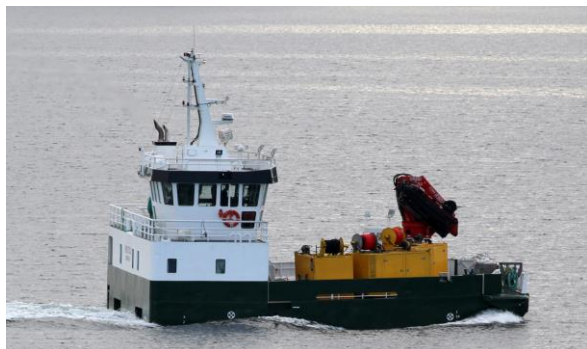
AQS BALDER

Yard Aas Mek. Verksted AS.
Gearbox 2 x G30FK
Propeller 2 x P35.13.170.3D –
Nozzle 2 x Rudder nozzle RD170
Engine 2 x 375 kW-1800 rpm



TØRRIS

Yard Poltramp
Gearbox G27FK - 3xPTO
Propeller P35.12.150.3
Engine 441 kW-1800 rpm



BRUTUS

Yard PTS Yard
Gearbox G35FK – 3 x PTO
Propeller P50.15.180.4
Engine 441kW-1800 rpm



TØRRIS

Yard SAFE Engineering
Gearbox G27K
Propeller P35.12.150.3
Engine 441 kW-1800 rpm



NØTTE

Yard VARD – Aukra, Y.no. 881
Gearbox 2G23-35F
Propeller P44.15.170.4D
Nozzle Rudder nozzle RD170x0,45
E-motor 2 x 275 kW-1500 rpm



DYKKERSERVICE 6 – 7 – 8 – 9 – 10

Yard Ocea AS/ PTS Ltd
Gearbox 2 x G27FK
Propeller 2 x Ø1125 mm
Engine 2 x 551 kW-1900 rpm



LERØY TRITON, OBELIX, SAFIR, BONDØY & RESTLESS CHALLENGER

Yard Fitjar Mek. Verksted AS. Y.no 202, 203, 204, 206, 208

Gearbox 2 x G23FK

Propeller 2 x P30.10.120.3

Engine 2 x 440 kW-1900 rpm



Finnøyveien 195

6487 Harøy

(+47) 712 76 000

post@finnoygear.no

finnoygear.no

For more information, please visit our website or contact:

Arne K. Nogva
Sales Manager
arne@finnoygear.no
(+47) 932 88 395

Norunn Finnøy
Marketing Manager
norunn@finnoygear.no
(+47) 932 16 591



Version 06/ 2022. Subject to changes and errors. The information given in this catalogue only contains general descriptions and performance features which may not always specifically reflect those in description, or which may undergo modification in the course of further development of the products.

