

FINNOY

More than 1500 installations worldwide

GLOBAL REFERENCES

For more than a century, shipyards, ship owners and naval architects have chosen Finnøy Gear & Propeller as the preferred provider of marine propulsion solutions. Our portfolio of reference projects spans over more than 1500 installations for a wide range of vessels. The overview here is not a complete list, but gives an overview of the segments in which we operate. Among others these include offshore, aquaculture, fishing, yachts, ferries and merchantile marine.

MEET US AT EXHIBITIONS

We are proud to present our company at domestic and overseas exhibitions in the maritime industry. Visit us online to have look at our exhibition calendar at finnoygear.com/exhibition.



Our location along the rough shores of north-western Norway has made us realize to never to compromise on quality. Our propellers are produced from NiAl-bronze, alternatively stainless steel per customers specification.



SUPPLY AND STANDBY VESSELS



SBS TORRENT

Yard Karmsund Maritime Service AS
Gearbox 2 x G60FK
Propeller 2 x P70.26.290.4
Engine 2 x 1980kW-750rpm



SEA TROUT

Yard Karmsund Maritime Service AS
Gearbox 2 x G60FK
Propeller 2 x P70.26.290.4
Engine 2 x 2030kW-1000rpm



TROMS FJORD

Yard Flekkefjord Slipp & Maskin.
Gearbox 2 x G60FK
Propeller 2 x P85.26.290.4
Engine 2 x 2400kW-750rpm



SIDDIS SUPPLIER

Yard JSC Severnaya
Gearbox 2 x G60FK
Propeller 2 x P85.26.290.4
Engine 2 x 2640kW-750rpm



ARIES WARRIOR

Yard Myklebust Verft AS
Gearbox 2 x G60FK
Propeller 2 x P85.26.290.4
Engine 2 x 2640 kW-750rpm



ESNAAD 710

Yard Balenciaga
Gearbox 2 x G60FP
Propeller 2 x P70.24.240.4D
Engine 4 x 1491kW-1800rpm

AHTS AND TUGS



HUACAI

Yard Donghai Shipyard
Gearbox 2 x G60FK - 2 x PTO
Engine 2 x 2500kW-720 rpm



DARICA

Yard Halic Tersanesi
Gearbox 2 x G50F
Propeller 2 x P58.20.220.4D
Engine 2 x 1326kW-1000 rpm
Nozzle Rudder Nozzle RD220

CHAMBON ALIZE

Yard Bogazici Shipping
Gearbox 2 x G50FK
Propeller 2 x P65.21.210.4D
Engine 2 x 1768kW-1000 rpm
Thrusters 2 x 400 kW, bow and stern



SEISMIC EXPLORATION



GEO BARENTS

Yard

Gearbox

Propeller

Engine

Hayward Solstrand AS

2G60-80

P105.38.400.4D

2 x 2650kW-1000rpm (Total 5300 kW)



SANCO SPIRIT & SANCO STAR

Yard

Gearbox

Propeller

E- motor

Vaagland Båtbyggeri AS

2 x G70FH

2 x P85.30.310.4D

2 x 2500kW-900/720rpm



FUGRO DISCOVERY

Yard

Gearbox

Propeller

Engine

Myklebust Verft AS

G70F

P85.32.340.4 , ICE 1B

2640 kW-600rpm



OCEAN EUROPE

Yard Havyard Solstrand AS
Gearbox 2 x G70FP
Propeller 2 x P85.30.320.4D
Engine 2 x 1768kW-1000rpm + PTI Booster 1200 kW-1200rpm
 Total 2 x 2968 kW



OCEANIC PHOENIX

Yard Bergen Group Halsnøy AS
Gearbox 2 x G90FP
Propeller 2 x P95.36.390.4D
E- motor 4 x 2000kW-1200rpm
 Total 2 x 4000 kW

RESEARCH VESSELS



R/V PRINCE MADOG
Yard Damen den Helder B.V,
Gearbox G50FP – 2SPEED
Propeller P58.20.210.4D
Engine 1080kW-1000 rpm
 PTI – Hybrid 250kW – 1500 rpm



R/V GUNNERUS
Yard Larsnes Mek. Verksted A/S
Gearbox 2 x G42F
Propeller 2 x P52.17.200.5D
 5 BLADED FPP - ICE C
E-motor 2 x 500kW-1200rpm

R/V SKAGERAK
Yard NAUTA
Servo Unit S20
Propeller P70.26.240.4D – BV ICE 1B
E-motor 1000kW- 252 rpm





KIGAM
KOREAN INSTITUTE OF MARINE SCIENCE.
COMBINED RESEARCH AND SEISMIC EXPLORATION VESSEL.

Yard HJ SHIPBUILDING & CONSTRUCTION, KOREA Y. no. S192
Gearbox 2 x G60-80E
Propeller 2 x P135.42.380.5D HS - KRS ICE 1B
E motors 4 x 1800 kW-1200 rpm

Built according to DNV SILENT R and SILENT S notation.



R/V VIRGINIA
Yard Méridien Maritime Réparation
Gearbox 2G27-42FK – 2 x PTO
Propeller P60.20.195.5D – 5 BLADE CPP
Engine 2 x 492 kW- 1800 rpm



R/V G. M. DANNEVIG
Yard Kystvågen Verft A/S
Gearbox 2G27-42F
Propeller
Engine 2 x 250kW-1800rpm

OIL & CHEMICAL TANKERS



ALPHA PROSPERITY & ALPHA PRESTIGE
Yard Atlantis Engineering
Gearbox G70FK
Engine 2460kW-750rpm



ÄNGÖN
Yard Naval Shipyard Gdynia
Gearbox G60FK
Propeller P85.28.300.4 – DNV ICE 1B
Engine 1310kW-825rpm



FJORD ONE
Yard Ö-varvet AB
Gearbox G42F
Propeller P50.17.210.4
Engine 940kW 1600rpm



FRAM
Yard Ö-varvet AB
Gearbox G50FKV
Engine 956kW-1600rpm



OCEAN BREEZE
Yard Aas Mek. Verksted AS
Gearbox 2 x G30K
Propeller 2 x P39.15.160.4D
Engine 2 x 537kW-1800rpm



SENJA
Yard Stocznia Marynarki
Gearbox G60FK
Propeller P85.28.300.4 - DNV ICE 1B
Engine 1310kW-825rpm

MERCHANT MARINE



WITH HARVEST & WITH MARINE

Yard Fiskerstrand Verft AS
Gearbox G80LFP
Propeller P95.30.380.4
Engine 2430 kW-1000 rpm (LNG engine)
+ PTI-PH 1000 kW-1800 rpm



WITH JUNIOR

Yard Moen Slip AS
Gearbox G60FK
Propeller P85.26.320.4
Engine 840kW-1000rpm



WITH FROHAVET

Yard Myklebust Verft AS
Gearbox G80FK
Propeller P105.38.400.4 DNV – ICE 1A
Engine 3000kW-600rpm



SVEALAND

Yard Moen Slip AS
Gearbox G60FK
Propeller P85.26.300.4 - ICE C
Engine 1912kW-1000rpm



MIKAL WITH

Yard Vaagland Båtbyggeri AS
Gearbox G50FK
Propeller P70.22.280.4
Engine 1140kW-1000rpm



EIDHOLM

Gearbox G50F
Propeller P58.19.240.4
Engine 800kW-1200rpm



NYFJELL

Gearbox G60F
Propeller P70.26.280.4
Engine 749kW-900rpm



ARTIC FJELL & RUBIN

Yard CRIST SA - POLAND
Gearbox GXU600FK
Propeller P78.26.320.4 ICE C
Engine 1800kW-1000rpm



DALFOSS, LANGFOSS, HOLMFOSS & POLFOSS

Yard

Myklebust Verft AS,
Y.no. 43, 44, 50, 51

Gearbox

G80FK

Propeller

P105.38.400.4 DNV - ICE 1A

Engine

3000kW-600rpm
2970kW-750rpm



YACHTS, FERRIES & PASSENGER SHIPS



GLORIA

Yard

Jongert BV, Holland

Gearbox

G23F

Engine

257kW-1800rpm



SCHOONER HAUKUR

Gearbox

G18

Propeller

P26.08.110.3 - Feathering

Engine

154kW-1900rpm

SOUTHERN SPIRIT

Gearbox

2 x G18

Engine

2 x 220kW-2100rpm





LILI MARLEEN

Yard Elsflether Werften
Gearbox G30FK
Propeller P39.12.130.4 - Feathering
Engine 660kW-2100rpm



FJÆRLANDSFJORD

Yard Solund Verft AS
Gearbox 2 x G27F(V)
Propeller 2 x P39.15.160.4
Engine 2 x 330 kW- 1800 rpm



EID

Yard Solund Verft AS
Gearbox 2 x G50F
Propeller 2 x P70.20.230.4 - Feathering
Engine 1119 kW- 1600 rpm





MATALIKI TOKELAU FERRY

Yard Western Marine Shipyard
Gearbox 2 x G42FK(R)
Propeller 2 x P39.15.170.4 - Feathering
Engine 2 x 480 kW - 1350rpm



ECONURI

Yard SAMSUNG HI
Gearbox 2 x G42F
Propeller 2 x P50.17.210.4
E-motor Engine 2 x 700/300 kW – 1200/900 rpm
Engine LNG -dual fuel



KVALØY

Yard Remontowa
Gearbox G42F
Propeller P50.17.180.4
Engine 970kW - 1800 rpm



VENGSTØY

Yard Remontowa
Gearbox G42F
Propeller P50.17.180.4
Engine 970kW - 2100 rpm



BIRSHRESTHA MD RUHUL ADMIN

Yard Western Marine Shipyard Ltd
Gearbox 2 x G30F
Propeller 2 x P39.13.140.4D
Engine 2 x 405 kW - 900rpm



JIIimaan

Yard Canadian Shipbuilding & Engineering Ltd
Gearbox 2 x G50F
Propeller 2 x P58.20.210.4
Engine 2 x 1030 kW - 1000rpm

LIVE FISH CARRIER



RO ARCTIC, RO SERVER, RO NORTH, RO WEST, RO FORTUNE, RO VISION, RO VENTURE, RO SENJA

Yard Larsnes Mek. V. AS , Y.no. 54, 55, 56, 57, 62, 65, 66, 70

Gearbox G70FP

Propeller P85.30.300.4D HS

E-motor 1800kW-900rpm + 1200kW-1800rpm (2999 kW)



RO SAILOR & RO TBN

Yard Larsnes Mek. V. AS Y.no. 67, 71

Gearbox G70FK

Propeller P85.30.320.4D

Engine 2999 kW-750 rpm



ORCAYKA

Yard Larsnes Mek. Verksted AS Y.no. 68

Gearbox G70FK

Propeller P85.30.320.4D

Engine 2999 kW-750 rpm



INTER ATLANTIC

Yard Zamakon, Spain Y.no. 802
Gearbox G70FP-2SPEED
Propeller P78.26.300.4D
Engine 2100 kW-750rpm



INTER TBN

Yard Zamakon, Spain Y.no. 803
Gearbox 2G30-50F
Propeller 2 x 1000 kW-1200 rpm
Engine kW-1200 rpm



INTER CALEDONIA

Yard Besiktas - Turkey
Gearbox G60FP
Propeller P78.26.300.4D HS
E- motor 1200+800kW-1200 rpm(tot. 2000 kW)



INTER BARENTS (Ex. LADY ANNE MARIE)

Yard VARD Aukra AS, Y.no 880
Gearbox G50FP
Propeller P65.22.240.4D HS
E-motor 2 x 750 kW-1800 rpm(tot. 1500 kW)



INTER NORD (Ex. BJØRG PAULINE)

Yard Vaagland Båtbyggeri AS.
Gearbox G70FP
Propeller P85.28.300.4D
E-motor 2 x 1250 kW-1800rpm



INTER FIORD (Ex. KIRSTI H)

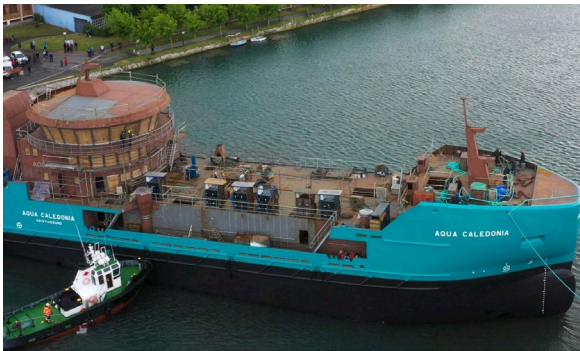
Yard Solund Verft AS
Gearbox G60FK
Propeller P70.26.260.4D HS
Engine 2030 kW-1000 rpm
Thrusters 300 - 360 kW



AQUASHIP (Ex MARTIN SÆLE)
Yard Gondan – Spain, Y.no 468
Gearbox G70FK
Propeller P78.26.300.4D HS
Engine 1920 kW-750 rpm



GRIP PACIFIC
Yard HAT-SAN TURKEY
Gearbox G60FK
Propeller P78.26.300.4D HS
Engine 1730 kW-900 rpm



AQUA CALEDONIA
Yard Balenciaga, Y.no. 414
Gearbox G60FP
Propeller P78.26.300.4D HS
E-motors 2 x 900 kW – 1500 rpm (tot.1800 kW)



RONJA HARVESTER & RONJA ATLANTIC
Yard Aas Mek. Verksted AS.
Gearbox GXU600FK
Propeller P85.26.280.4D
Engine 1920kW-1600 rpm



KRISTOFFER TRONDS
Yard MURUETA SA – Spain Y.no 320
Gearbox 2G42-60F
Propeller P78.30.300.4D HS
E-motor 2 x 1495 kW-1200 rpm (tot. 2990 kW)

PROCESS VESSELS



TAUPO, TAUPIRI & TAUMAR

Yard Fitjar Mek. Verksted AS, Y. no. 39, 43 and 49
Gearbox G50FKV (39,43) G50FK (49)
Propeller P65.22.240.4D HS (39,43) P58.20.220.4D HS (49)
Engine 1350 kW-1400 rpm (39,43), 1044 kW-1200rpm (49)



SEIHAUST

Yard Fitjar Mek. Verksted AS, Y. no.42
Gearbox G50FKV
Propeller P65.22.240.4D HS
Engine 1350 kW-1400 rpm



HORDAFJELL,

Yard Fitjar Mek. Verksted AS, Y.no. 48
Gearbox G42FK
Propeller P50.17.190.4D HS
Engine 746kW-1800 rpm



MACHO 36 ARV – EMMANUEL
Yard Crisp Bros in Australia
Gearbox G50FPV
Propeller P58.19.240.4D HS
Engine 736kW - 1800rpm
 +PTH «Power Take Home»
 300kW 0-1500rpm

AQUA MIST & VOLT HARVEST 1

Yard Fitjar Mek. Verksted AS, Y.no. 45, 53
Gearbox G42FK
Propeller P50.17.190.4D HS
Engine 746kW-1800 rpm



VOLT HARVEST II & VOLT HARVEST III

Yard Fitjar Mek. Verksted AS, Y.no. 50, 51
Gearbox G42FKP
Propeller P50.17.190.4D HS
Engine 746kW-1800 rpm + PTI 300kW

FONNALAKS

Yard Balenciaga, Y.no. 412
Gearbox G60FP
Propeller P65.22.240.4D HS
Engine 1044kW-1135 rpm + PTI 500kW

FISH FARMING SERVICE



MACHO 25 – FRØY SERVER
Yard Sletta Verft Y.no 145
Gearbox G50FKV – 2 x PTO
Propeller P58.19.240.4D - HS
Engine 735 kW-1800 rpm



MACHO 40 – FRØY FIGHTER
Yard Sletta Verft Y.no 150
Gearbox G50FKV – 2 x PTO
Propeller P58.19.240.4D - HS
Engine 735 kW-1800 rpm



MACHO 25 DE – FRØY FINNMARK
Yard Sletta Verft Y.no 169
Gearbox 2G23-35F
Propeller P58.19.240.4D - HS
E-motor 2 x 374 kW-1500 rpm



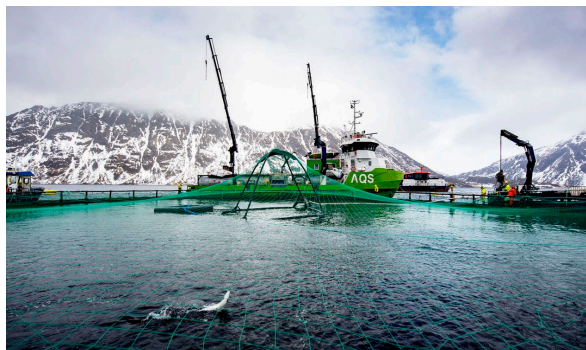
MACHO 25 DE – NOVA MASTER
Yard Sletta Verft Y.no 171
Gearbox 2G23-35F
Propeller P58.19.240.4D - HS
E-motor 2 x 374 kW-1500 rpm



MACHOCAT 25 – FRØY HARVEST
Yard Sletta Verft Y.no 157
Gearbox 2 x G35F
Propeller 2 x P39.13.170.4D HS
E-motor 2 x 375 kW-1800 rpm



MACHOCAT 25 – FRØY VALKYRIEN
Yard Sletta Verft Y.no 158
Gearbox 2 x G35F
Propeller 2 x P39.13.170.4D HS
E-motor 2 x 375 kW-1800 rpm



AQS ODIN

Yard Moen Marin AS.
Gearbox 2 x G27F
Propeller 2 x P35.12.150.3
Engine 2 x 331 kW-1800 rpm



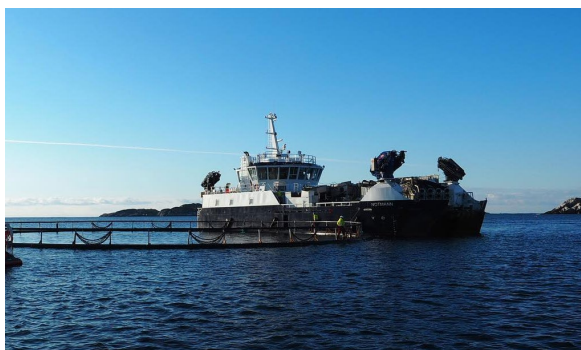
PERLE

Yard Viknaslipen Y.no 30
Gearbox 2 x G23FK – 2 x PTO
Propeller 2 x P34.12.120.4
Engine 2 x 375 kW-1800 rpm



NOTMANN & NOTHAV

Yard NSS Spolka
Gearbox 2 x G27F
Propeller 2 x P30.12.150.3D
Engine 2 x 331 kW-1800 rpm



FDA ASTRID & FDA FINN

Yard Salthammer Y.no 146 - 148
Gearbox G42FK / G42FKR – 2 x PTO
Propeller 2 x P39.13.170.4D
Rudder nozzle 2 x RD170x0,45 HS
Engine 2 x 368 kW-1800 rpm



NIKLAS

Yard Fitjar MV. AS Y.no 218
Gearbox 2G27-42F
Propeller P50.17.190.4D HS
E-motor 2 x 375 kW-1800 rpm



MARØY VIKING, TROLL, KB NAMDAL, HELNESSUND, GODFISKEN, AQUA SERVICE, AQS TOR, COSTAL SERVER & KB ROKK

Yard MOEN MARIN AS. Tehn. Y.no. 99, 100, 101, 103, 108,111,114,115, 119
Gearbox G42FK – 2 x PTO
Propeller P50.17.170.4D HS – P50.17.190.4D HS
Engine 735kW-1800 rpm



FISH FARMING SERVICE – 15 M.



OCEAN APOLLO

Yard ETKIN Marin
Gearbox G27FK – 2 x PTO
Propeller P34.12.130.4D
Engine 287 kW-1900 rpm



AURORA

Yard Viknaslipen Y.no. 17
Gearbox G18FK – 2 x PTO
Propeller P26.9.120.3
Engine 291 kW-1900 rpm



AURORA QUEST

Yard Viknaslipen Y.no. 35
Gearbox G23FK – 2 x PTO
Propeller P34.12.130.4
Engine 287 kW-1900 rpm



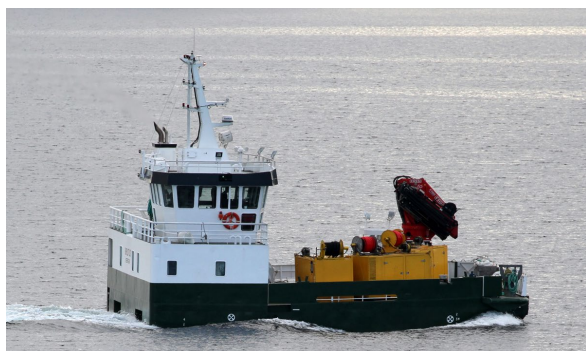
AQS BALDER

Yard Aas Mek. Verksted AS.
Gearbox 2 x G30FK
Propeller 2 x P35.13.170.3D –
Nozzle 2 x Rudder nozzle RD170
Engine 2 x 375 kW-1800 rpm



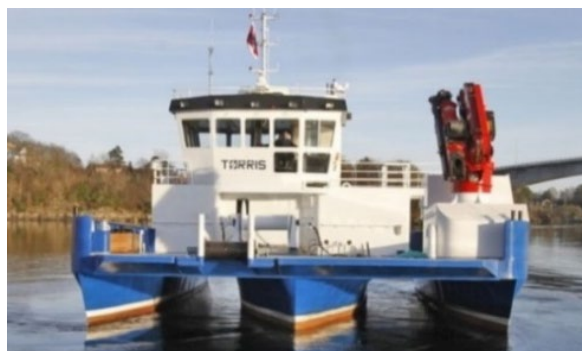
TØRRES

Yard Poltramp
Gearbox G27FK - 3xPTO
Propeller P35.12.150.3
Engine 441 kW-1800 rpm



BRUTUS

Yard PTS Yard
Gearbox G35FK – 3 x PTO
Propeller P50.15.180.4
Engine 441kW-1800 rpm



TØRRIS

Yard SAFE Engineering
Gearbox G27K
Propeller P35.12.150.3
Engine 441 kW-1800 rpm



NØTTE

Yard VARD – Aukra, Y.no. 881
Gearbox 2G23-35F
Propeller P44.15.170.4D
Nozzle Rudder nozzle RD170x0,45
E-motor 2 x 275 kW-1500 rpm



DYKKERSERVICE 6 – 7 – 8 – 9 – 10

Yard Ocea AS/ PTS Ltd
Gearbox 2 x G27FK
Propeller 2 x Ø1125 mm
Engine 2 x 551 kW-1900 rpm



LERØY TRITON, OBELIX, SAFIR, BONDØY & RESTLESS CHALLENGER

Yard Fitjar Mek. Verksted AS. Y.no 202, 203, 204, 206, 208

Gearbox 2 x G23FK

Propeller 2 x P30.10.120.3

Engine 2 x 440 kW-1900 rpm



OCEANGOING FISHING FLEET



SMARAGD

Yard

Gearbox

Propeller

Engine

HAVYARD LEIRVIK AS

G80FK – 2SPEED

P95.35.360.4D HS – ICE C

4000 kW-600 rpm



DON OLE

Yard

Gearbox

Propeller

Engine

Thrusters

Fitjar Mek. Verksted AS, Y. no. 37

G70FK – 2SPEED

P85.30.320.4D HS

3000 kW-750 rpm

2 x 590 kW, bow and stern



INGER HILDUR

Yard

Gearbox

Propeller

Engine

Aas Mek

G70FK

P85.32.340.4D

2426 kW-750rpm



KETLIN

Yard
Gearbox G60F
Propeller P70.23.260.4D
Engine 1650 kW-1000rpm



NEPTUN

Yard Ö-varvet AB
Gearbox G70FK – 3 x PTO
Propeller P78.26.315.4D HS
Engine 1765 kW-1000rpm



SKÅR SENIOR

Yard Båtbygg AS
Gearbox G60FK
Propeller P85.30.300.4D - ICE C
Engine 2400 kW-750rpm



ROALDSEN

Yard
Gearbox G70FK
Propeller P85.32.340.4D
Engine 2426 kW-750rpm



ABELONE MØGSTER

Yard Larsnes Mek. V. AS.
Gearbox G60FPV
Propeller P78.29.300.4D
Engine 1370 kW-900 rpm
 PTI "Boost": 800 kW



NYSTRØM

Yard Solstrand Verft AS
Gearbox G60FK – 2SPEED
Propeller P70.26.280.4D HS
Engine 1900 kW-900rpm.



FREESIA, FUCHSIA, FOREST LILY & FOXGLOVE

Yard Astilleros Armon
Gearbox G70FK
Propeller Ø3000
Engine 1950kW-1000rpm/
 1860kW-1000rpm



ECOFIVE
Yard WESTCON YARDS AS
Gearbox 2 x G90FP
Propeller 2 x P95.34.380.4D
Rudder nozzle 2 x RD380x0,5 HS
Engine 2 x 2880kW - 900rpm



ATLANTIC DESTINY

Yard Karstensens AS
Gearbox G70FK
Propeller P85.32.300.4D – GL ICE E1
Engine 1845kW-900rpm



ANNE RISLEY

Yard ASTANDER Shipyard
Gearbox 2 x G60FK
Propeller 2 x P85.26.290.4
Engine 2 x 2640kW-750rpm



ARVID NERGÅRD & OLE KRISTIAN NERGÅRD

Yard Vaagland Båtbyggeri AS
Gearbox G60FK
Propeller P85.30.300.4D - ICE C
Engine 1900kW-900rpm



ROALDNES

Yard Vaagland Båtbyggeri AS
Gearbox G60FK – 3 x PTO
Propeller P70.26.280.4D
Engine 1900 kW-900rpm

NORDBAS

Yard KLEVEN AS
Gearbox 2G60-80FP
Propeller P95.34.350.4D
Rudder Rudder nozzle
Engine 2652kW + 1326kW - 1000rpm Total power 3978 kW





VARD 808 – 7 TWIN SCREW TRAWLERS FOR ICELAND
 Vestmannaey, Bergey, Harðbakur, Vörður, Áskell, Steinunn & Þinganes
Yard Vard Aukrá/ Brattvåg, Y.no 891, 892, 893, 894, 895, 896, 899
Gearbox 2 x G42FKV/ G42FKR
Propeller 2 x P44.17.200.4D
Engine 2 x 294/ 480 kW-1350rpm



HAUKAFJELL, THINGANES, AESKAN & EYBORG
Yard Carnave Shipyard
Gearbox G50FK
Propeller P70.22.250.4D
Rudder nozzle RD250x0,5 19A
Engine 730 kW-900rpm



AVRO CHIEFTAIN & AVRO VIKING
Yard UMOE Sterkoder AS.
Gearbox G50F
Propeller P70.23.260.4 – ICE C
Engine 1 650 kW-1000rpm.



ROLF ASBJØRN
Yard Tersan Y.no. 1052
Gearbox G50F
Propeller P58.19.230.4
Engine 746kW-1800rpm



GEIR II
Yard Fiskerstrand V. AS
Gearbox G60F
Propeller P70.24.270.4 – ICE C
E-motor 1800 kW-1200rpm.

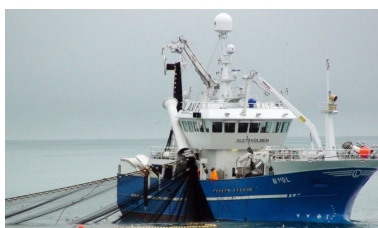


VONAR
Yard Larsnes Mek. Verksted AS
Gearbox G60FK
Propeller P70.23.280.4 – ICE C
Engine 1324 kW-1000rpm



SEIR
Yard Vaagland Båtbyggeri AS.
Gearbox G60FK – 2SPEED
Propeller P70.26.290.4 – ICE C
Engine 1920 kW-750rpm.

COASTAL FISHING FLEET



BERNT OSKAR, SOLVÆRSKJÆR, SLETHOLMEN, HEPSØYHAV, HOVDEN VIKING, SJØGLANS

Yard Larsnes Mek. V. A/S. Y.no. 49, 48, 46, 45, 44, 43
Gearbox G50FKV
Propeller P70.22.250.4
Engine 1324 kW-900rpm



SKREIGRUNN
Yard GOT Skogsøy Y.no. 127
Gearbox G50FPV-2SPEED
Propeller P65.20.270.4
Engine 736 kW-800 rpm



NORD FUGLØY
Yard Larsnes Mek. V. AS, Y.no. 69
Gearbox G70FP-2SPEED
Propeller P78.26.340.4
Engine 1920 kW-750rpm



JARLE BERG

Yard

Gearbox

Propeller

Engine

Larsnes Mek. V. AS Y.no. 72

G70FP-2SPEED

P78.26.340.4

1920 kW-750 rpm



ELIAS JOHAN

Yard

Gearbox

Propeller

Engine

Vestværflet Y. no. 363

G70FP-2SPEED

P78.26.340.4D

1920 kW-750 rpm



BERNT OSKAR

Yard

Gearbox

Propeller

Engine

Vestværflet Y.no. 364

G70FP-2SPEED

P78.26.340.4D

1920 kW-750 rpm



TRØNDERHAV

Yard Thyborøn Y.no 180
Gearbox G50FK – 2 X PTO
Propeller P78.26.300.4
Engine 1326 kW-1000rpm



TBN#1 & TBN#2

Yard Tehnomont Y.no 117, 118
Gearbox G50FKV
Propeller P70.22.300.4
Engine 588 kW-1400rpm



VIKANØY

Yard Özata Shipyard Y.no 63
Gearbox G60FK
Propeller P70.26.290.4
Engine 1920 kW-750 rpm



JULIE PAULINE

Yard Özata Shipyard Y.no. 68
Gearbox G50FK-2SPEED
Propeller P78.26.300.4
Engine 1326 kW-1000 rpm



RESILIENT

Yard Parkol Marine Eng. – UK
Gearbox G50FKV – 2 x PTO
Propeller P65.20.270.4D
Engine 588 kW-1400rpm



KNUT OLAV & BALLSTADØY

Yard VESTVÆRFET Y 326-303
Gearbox G50FK
Propeller P70.22.280.4
Engine 1326 kW-1000 rpm



SANDER ANDRE, NORDHAVET & GUNNAR K.

Yard Larsnes Mek. V. A/S. Y.no. 58, 59, 60
Gearbox G50FKV
Propeller P65.22.260.4
Engine 1370 kW-900rpm



SULEBAS & VESTERHAV

Yard Solund Verft, Y.no. 6 - 7
Gearbox G50FK
Propeller P70.22.280.4
Engine 1326 kW-1000 rpm



SULEHAV

Yard Thyborøn Y. no. 170
Gearbox G50FK – 2 x PTO
Propeller P70.22.290.4
Engine 1326 kW-1000 rpm



QUO VADIS

Yard Tersan Y.no. 1051
Gearbox G50FK
Propeller P70.22.240.4D-HS
Engine 1326kW-1000rpm



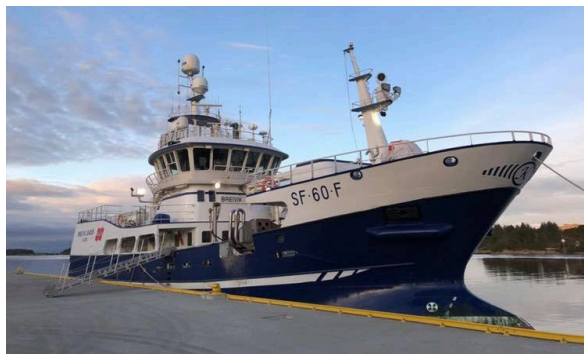
JENS KRISTIAN

Yard Stadyard AS, Y. no. 44
Gearbox G50FK-2SPEED
Propeller P65.22.260.4
Engine 1326 kW-1000 rpm



T.A SENIOR

Yard Stadyard AS – Y.no. 39
Gearbox G35FKV – 2 x PTO
Propeller P50.15.190.4
Engine 610kW-1900rpm



BREIVIK JUNIOR

Yard VARD Braila, Y 803
Gearbox G50FK
Propeller P58.19.230.4
Engine 746kW-1800rpm



BALLSTADVÆRING

Yard Skogsøy Båt AS
Gearbox G42FKV – 2 x PTO
Propeller P58.17.230.4
Engine 736 kW-1800rpm



ARKÖ

Yard Tjörnvarvet AB
Gearbox G50FKV – 3xPTO
Propeller P70.22.280.4D HS
Engine 749kW-1500rpm



BEN HUR

Yard Skogsøy Båt AS
Gearbox GXU420FK
Propeller P50.17.210.4
Engine 736kW-800rpm
FINNØY 37



STORMHAV

Yard Stadyard AS, Y. No. 43
Gearbox G50FK-2SPEED
Propeller P58.19.230.4
Engine 837 kW-1450 rpm

COASTAL SERVICE



SEYIT ONBAŞI

Yard Istanbul Tersane
Gearbox 2 x G42F(R)
Propeller 2 x P50.17.160.4D
Engine 2 x 1170kW-1600 rpm



REX, FOX, TRIX & LYNX

Yard Poltramp – Y.no 28, 29, 30, 31
Gearbox G23K
Propeller P30.12.140.3
Engine 331 kW-1800 rpm

UTVÆR & SKOMVÆR

Yard Fitjar Mekaniske Verksted AS Y.no. 33 & 34
Gearbox 2 x G50F
Propeller 2 x P70.23.220.4, DNV ICE-1C
E-motor 2 x 1500kW-1800 rpm



Finnøyveien 195

6487 Harøy

(+47) 712 76 000

post@finnoygear.no

finnoygear.no

For more information, please visit our website or contact:

Arne K. Nogva
Sales Manager
arne@finnoygear.no
(+47) 932 88 395

Norunn Finnøy
Marketing Manager
norunn@finnoygear.no
(+47) 932 16 591



Version 22/ 2022. Subject to changes and errors. The information given in this catalogue only contains general descriptions and performance features which may not always specifically reflect those in description, or which may undergo modification in the course of further development of the products.

